



School District of New London

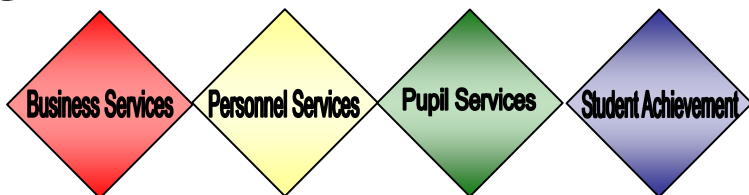
DIVISION

MONTHLY UPDATE

By: Ann Christopherson

Division: Pupil Services

Date: October 2011



Junta Latina

On October 3rd, our Latino and other ESL families celebrated the start to the school year in the New London High School commons for our annual, Junta Latina.



Again, we drew a large crowd of people to see a showcase of student work from the beginning of the school year and to visit bilingual and other staff members in our schools. Each year we become a bit more diverse with additional people coming in to experience foods, fun and culture within the New London schools.

While there was food and fun, teachers also had an opportunity to complete reviews of their Student Record Plans with parents and get signatures on permission slips for program involvement for this new school year.

Changes in Child Development Days

On October 19th, we have our first Child Development Day (CDD) screening in the school district. We have changed our format in a two-fold way – in cost savings and in screening within a child-focused, friendly atmosphere. We will not need to pay for hall rentals or utilize the time of Mr. Gorges and Mr. Hathorne in transporting equipment to a different site. All screening will take place within the Early Childhood: Special Education (EC:SE) classroom at NLHS. This will enable families to see their children in an age-appropriate environment while we complete screening.

All screening is completed for children between the ages of 2 and 4 ½ years of age who reside within the School District of New London. Screening fulfills the state's mandated child find efforts. We work collaboratively with Waupaca and Outagamie County Early Intervention agencies and Head Start.

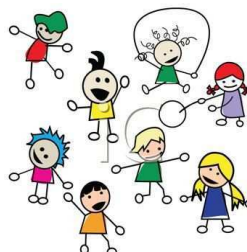
Our EC:SE teachers, bilingual teachers/tutors, school psychologists, and speech/language pathologists, serve as screeners in checking youth for age-appropriate development in speech, pre-academics, gross and fine motor skills. Screeners then meet with the parents and shares skill accomplishments and next steps in their child's development. Those children who trigger concerns are referred on for formal evaluation processes. Community resources and an As-A-Nurse station also assist our families.

This year CDD will take place over 3 separate days in the district with a focus on the children's birthdates:

Oct 19, 2011 –birthdays in April, May, June, July, Aug., & Sept.

Jan. 25, 2012 – birthdays in Oct., Nov., Dec., Jan., Feb., & March

March 7, 2012 – re-screenings and screening of children new to the district.



Screenings will run from 2:00-6:00 PM, as scheduled appointments, on each of the dates mentioned above.

Equipment Donation

The Erich and Deb Hintz family has donated a Tumble Form Jettmobile to our special education program. New, the piece of equipment would cost the program \$590.00. We are thrilled to have this addition to our program. It improves the student's perceptual-motor skills and strengthens the arms and upper trunk by using the equipment.

