



# School District of New London

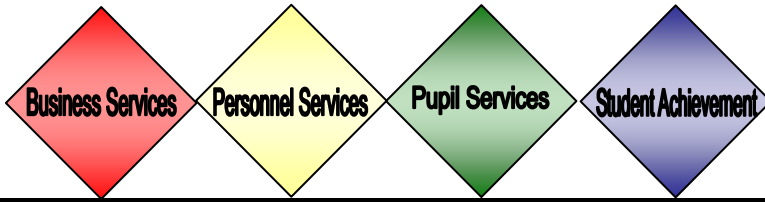
**DIVISION**

**MONTHLY UPDATE**

By: Ann Christopherson

Division: Pupil Services

Date: January 2010



High School students identified with disabilities will be taking part in the Learning for Life curriculum. A regional speaker will address career interest areas of our students provided through the Learning for Life program monthly in each of our 4 core special education classrooms at New London High School.

A partnered curriculum focuses on selections from 57 lessons on personal, social, and civic responsibility, social skills, independent living, and job preparedness training which is tied to the core curriculum. Many of the classroom discussions and assignments are individualized and may later become documents for individual student portfolios now required for graduation. Assignments and speakers will focus on the four core areas of English/Language Arts, Consumer Mathematics, Personal Finance, Social Studies, and Sciences as connected through Daily Living Skills.

This is a free opportunity for our schools beginning in the coming semester. Now that we have "made the cut," we will have the opportunity to expose our high school students with disabilities similar opportunities in the spring of coming years as well.

## SCHOOL LANGUAGES

With ever changing diversity, we now speak 7 native languages in the School District of New London. Our languages spoken in schools are:

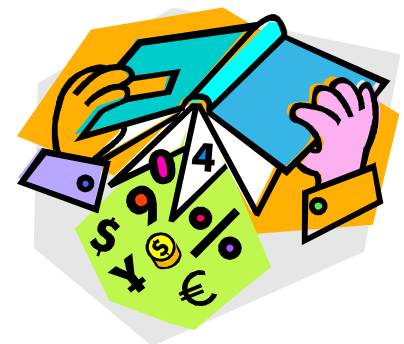
- English
- Spanish
- Hmong
- Mandarin Chinese
- Tagalog
- Vietnamese
- Czech

The School District of New London currently serves 149 English Language Learners with the support of four full-time bilingual teachers and two full-time bilingual tutors.

## Math Expressions

Since special training in Math Expressions was held in November, for our special educators in grades Early Childhood through grade 8, we await delivery of "out-of-level" math materials for use with Early Childhood: Special Education, CD-S, and Middle School Special Education classes.

Out-of-level materials simply means that we will be using Math Expressions materials developed for a different grade level in helping children with identified disabilities reap the benefits of the program. An example is the purchase of grades 2 -5 teacher editions and manipulative kits for the middle school staff to re-teach students in math problem solving and calculation which they would not have been exposed in their elementary years. In working this way, we plan to reduce the current gaps with this subgroup in our schools.



At the elementary school level, special educators already have these materials and are working in a similar fashion to support children in their understanding of the world of Mathematics.